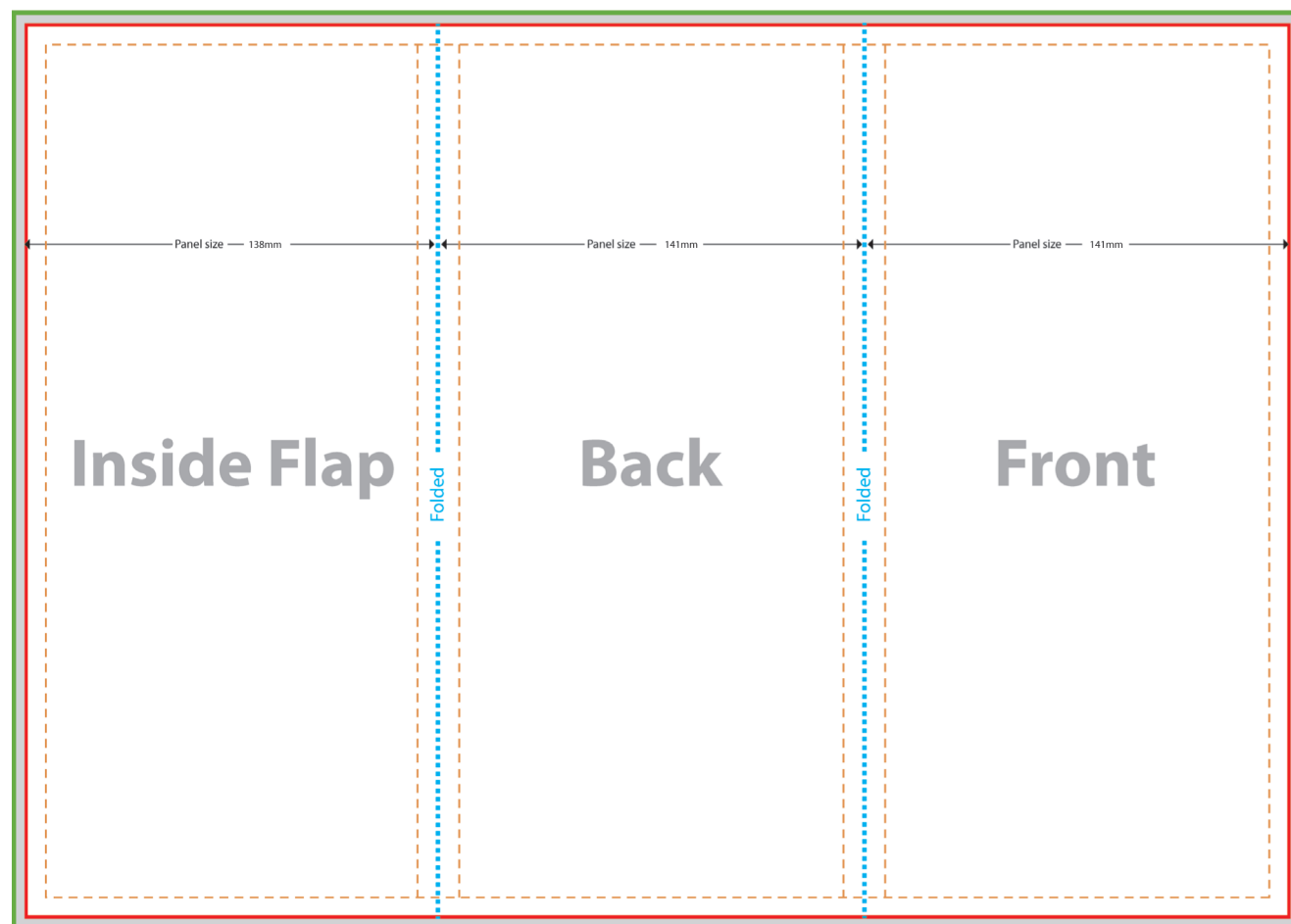


A3-Roll Folded Menu

Front



- Finished Size: 420mm x 297mm
- Bleed Size (Artwork Size): 426mm x 303mm
- Safe Zone: 410mm x 287mm
- Folding Line

Colour

CMYK only. Use of other colour scheme such as RGB or Pantone will result in inaccurate output colour.

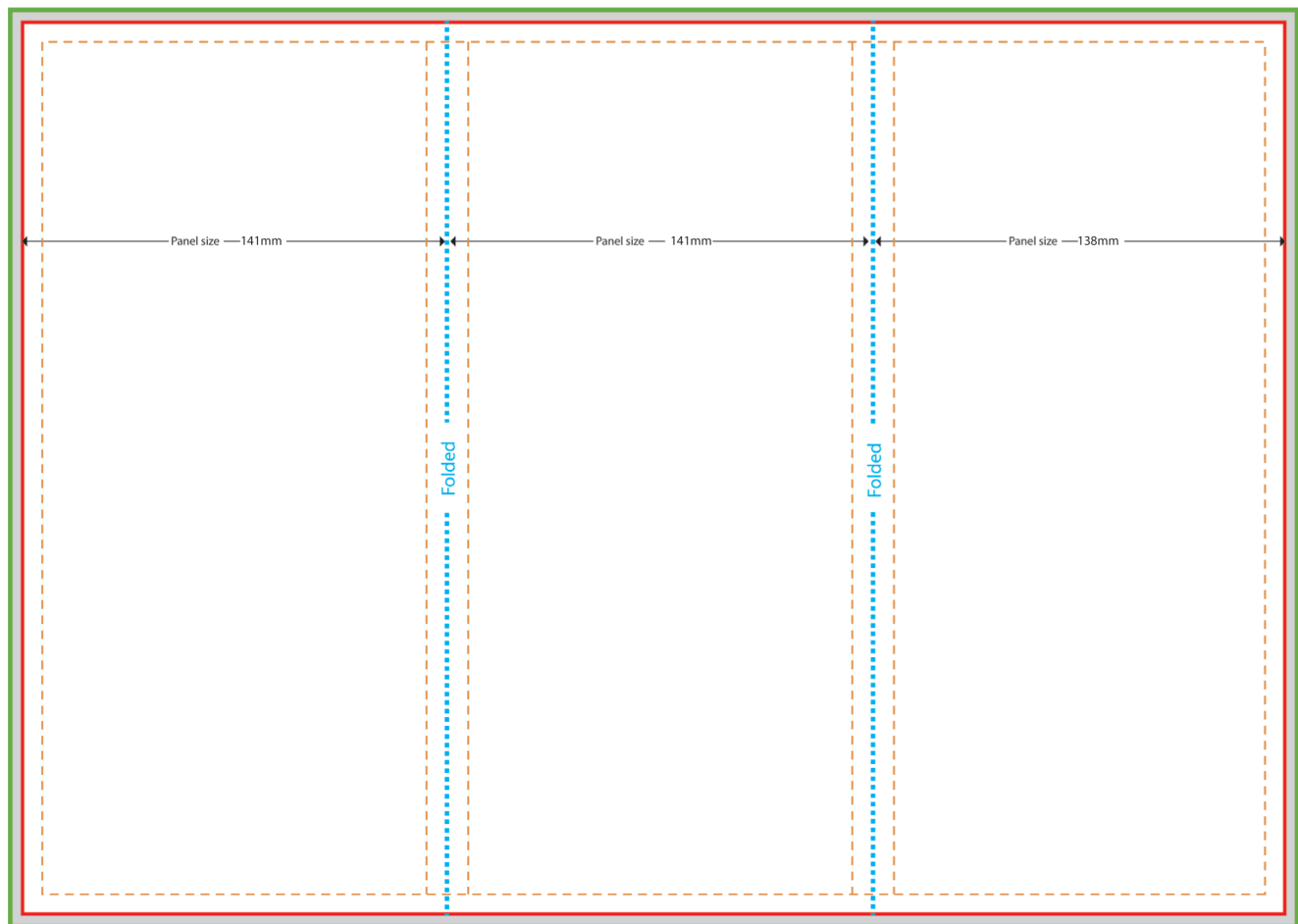
Font

All text must be OUTLINED.

Images

Use of low resolution images will result in poor print quality. **300dpi or above** are recommended.
All (placed / imported / linked) images must be supplied separately.
All transparency objects must be flattened.

Back



- Finished Size: 420mm x 297mm
- Bleed Size (Artwork Size): 426mm x 303mm
- Safe Zone: 410mm x 287mm
- Folding Line

Colour

CMYK only. Use of other colour scheme such as RGB or Pantone will result in inaccurate output colour.

Font

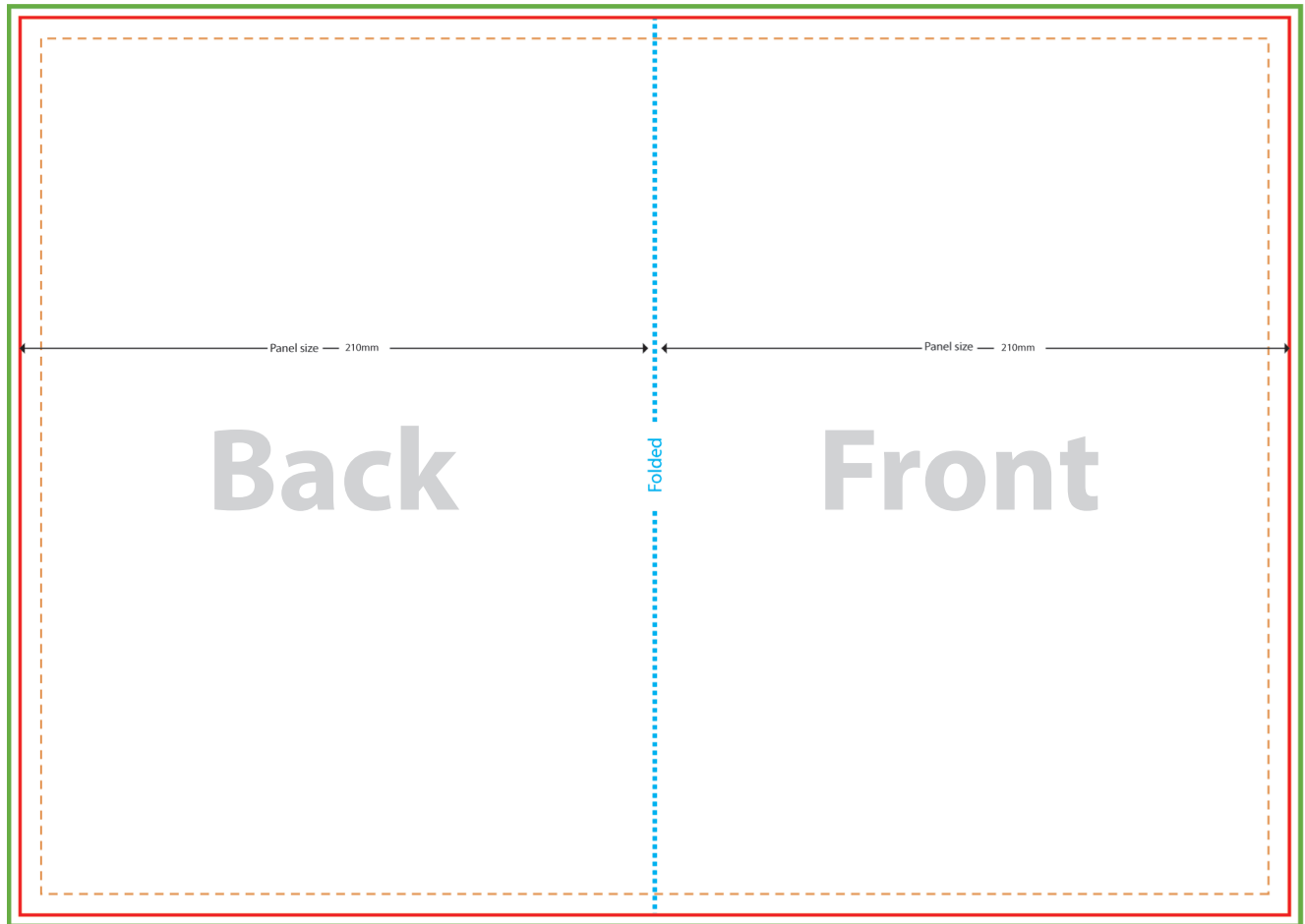
All text must be OUTLINED.

Images

Use of low resolution images will result in poor print quality. **300dpi or above** are recommended.
All (placed / imported / linked) images must be supplied separately.
All transparency objects must be flattened.

A3-Folded A4 Brochures

Front



- Finished Size: 420mm x 297mm
- Bleed Size (Artwork Size): 424mm x 301mm
- Safe Zone: 410mm x 287mm
- Folding Line

Colour

CMYK only. Use of other colour scheme such as RGB or Pantone will result in inaccurate output colour.

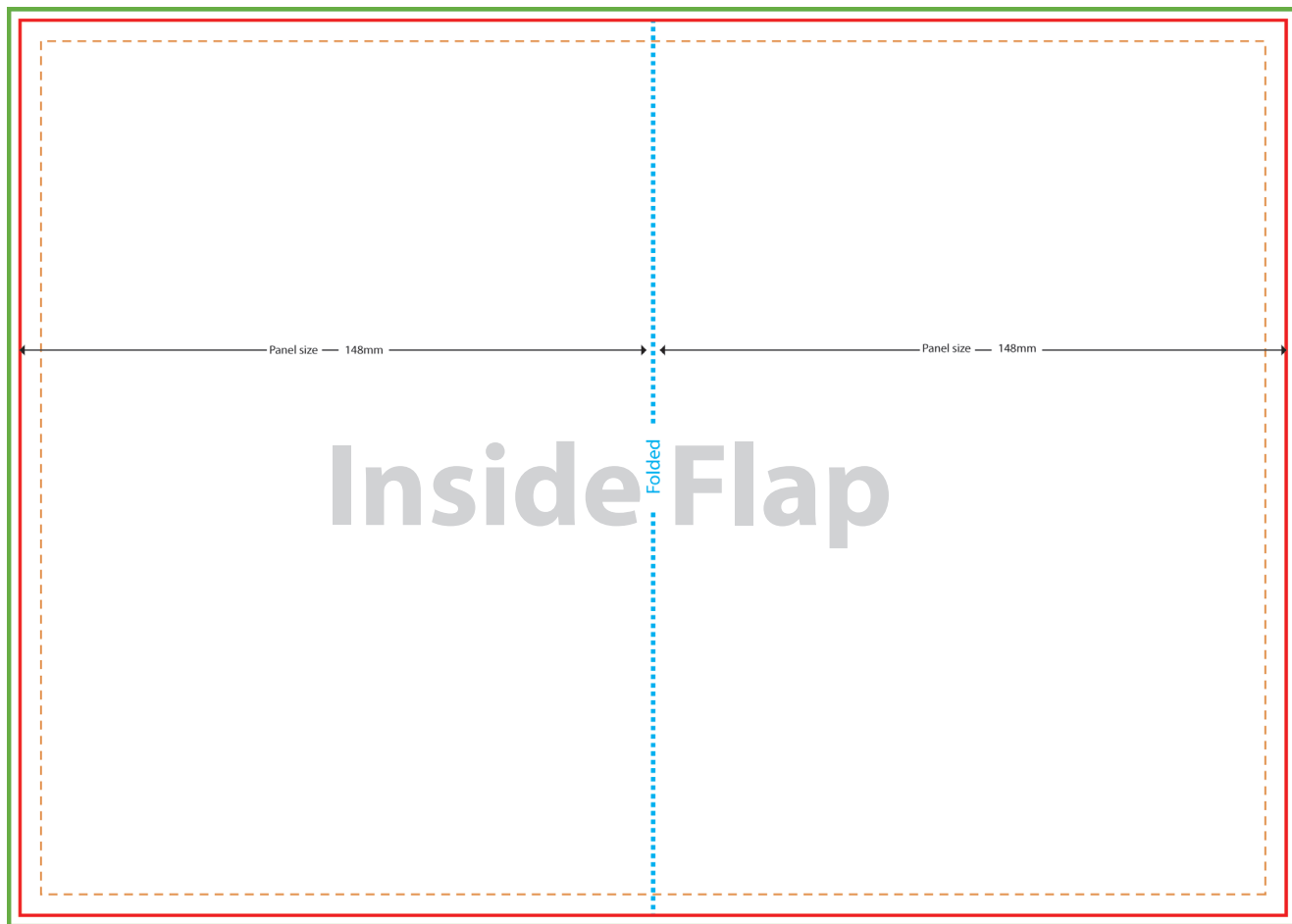
Font

All text must be OUTLINED.

Images

Use of low resolution images will result in poor print quality. **300dpi or above** are recommended.
All (placed / imported / linked) images must be supplied separately.
All transparency objects must be flattened.

Back



- Finished Size: 420mm x 297mm
- Bleed Size (Artwork Size): 424mm x 301mm
- Safe Zone: 410mm x 287mm
- Folding Line

Colour

CMYK only. Use of other colour scheme such as RGB or Pantone will result in inaccurate output colour.

Font

All text must be OUTLINED.

Images

Use of low resolution images will result in poor print quality. **300dpi or above** are recommended.
All (placed / imported / linked) images must be supplied separately.
All transparency objects must be flattened.